

You think it's clean, but...

Conventional
Toothbrush

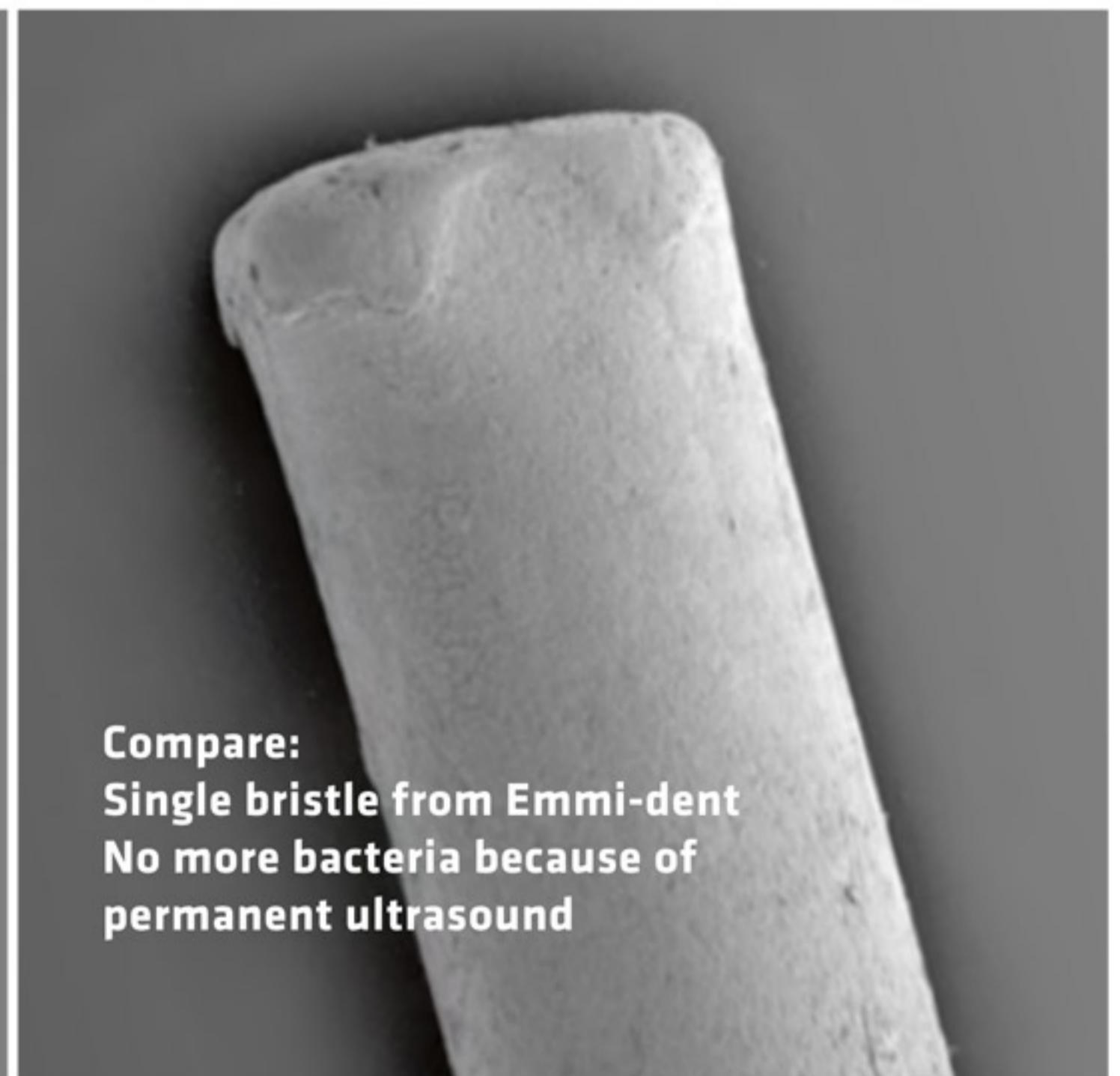
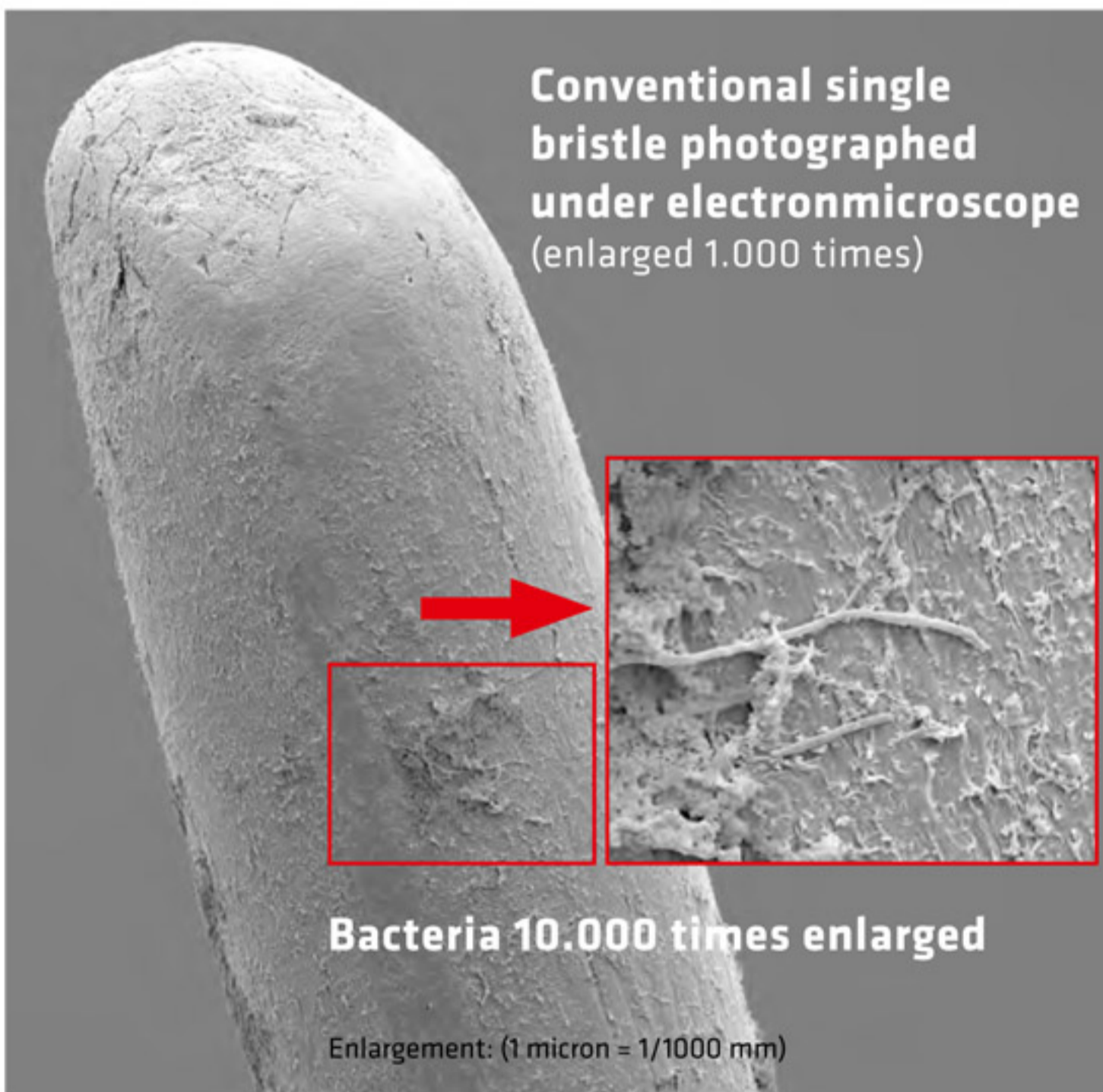
versus

Emmi-dent
100% Ultrasonic



BACTERIA SURVIVE

BACTERIA ARE DESTROYED



This image shows one bristle from a conventional toothbrush. The brush was used in a normal way with toothpaste and then rinsed with water.

Emmi-dent bristle used with nano-bubbles toothpaste and rinsed after use. Bacteria cannot be found because the ultrasound kills and implodes it effectively (so it vanishes completely).

It's shocking: Bacteria you rub away with your brush survive on the bristles and are back on your teeth with the next brushing. Uhhh...



SUPERIOR DENTAL HYGIENE

ULTRASOUND WORKS AGAINST PERIODONTITIS AND TOOTH ABRASION

The unexpectedly major increase in periodontal dental disease worldwide is a result of ever degrading oral hygiene, due to the lack of truly suitable means for cleaning teeth.

Approximately 75% of Americans brush their teeth with a conventional, manual toothbrush. Since people are often lazy and impatient, they trim their cleaning time and effort.

The traditional teeth cleaning with a mechanical toothbrush works with abrasive particles inside the toothpaste and can be compared to working on wood or metal surfaces with sandpaper. For the many people who have recurrent or persistent problems with tooth enamel or receding gums, brushing is rubbing and pressing, which leads to pain.

Experts in the U.S., England and Germany have identified a previously unrecognized issue as the cause of bacterial contamination of the oral region: the toothbrush itself!

Emmi-dent Ultrasonic kills the bacteria; only Emmi-dent bristles are clean of bacteria

Since the 1950s, the cleaning and sterilizing effect of ultrasound has been scientifically examined and confirmed. It was not available for oral use, however, because a suitable, harmless method did not exist. In 2004, the German company EMAG developed an ultrasonic technology to be used in a device, Emmi-dent, for dental cleaning and oral hygiene. The ultrasound penetrates up to 12 mm into the gums.

Now being introduced in the U.S., the Emmi-dent is a nonabrasive ultrasonic toothbrush that is dramatically reducing plaque and periodontal disease while whitening your teeth within days. It is the only toothbrush that kills bacteria in the gum pockets, preventing inflammation, periodontitis, and bad breath. With 96 million air oscillations per minute, it causes no abrasion and no resulting damage to the teeth and gums.

Emmi-dent cleans motionlessly and gently through the implosion of its special nano-bubble toothpaste that conducts ultrasonic waves into the smallest cavities and gingival pockets, where even dental floss cannot reach. This toothpaste creates billions of minuscule nano-bubbles that can penetrate even the smallest crevice, surround the bacteria, and destroy it. Its therapeutic effect is evident within a few days, even in advanced acute cases. To brush your teeth, simply hold the Emmi-dent over your teeth and gums for a few seconds, then move it to the next section of your mouth.

Manual, electric and sonic toothbrushes clean only where the bristles reach, and abrasive particles in commercial toothpaste damage the enamel. Emmi-dent not only preserves the enamel but restores it to its natural white color by removing the stains. Ultrasound and nano-bubbles expel color pigments from coffee, wine, nicotine and food, as well as calculus that sticks in microscopic pits and discolors teeth, dramatically reducing the need for additional tooth whitening procedures.

Up to
96 Million
Oscillations
per Minute



Emmi-Tech Inc.

95 Washington Street, Suite 104-182 · Canton, MA 02021 · USA
Phone: +1 866 766 0278 ext. 101 · sales@emmi-dent.com

Emmi Ultrasonic AG

Im tiefen Boden 39 · 4059 Basel · Schweiz
Telefon: +41 78 6686000 · info@emmi-dent.com

WWW.EMMI-DENT.COM · PATENTED AND PROVEN TECHNOLOGY MADE IN GERMANY

